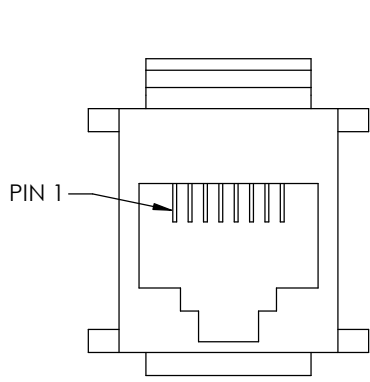
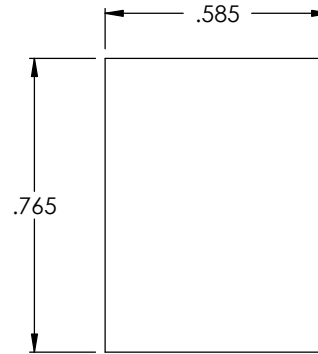
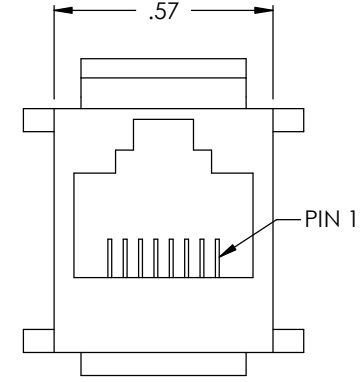
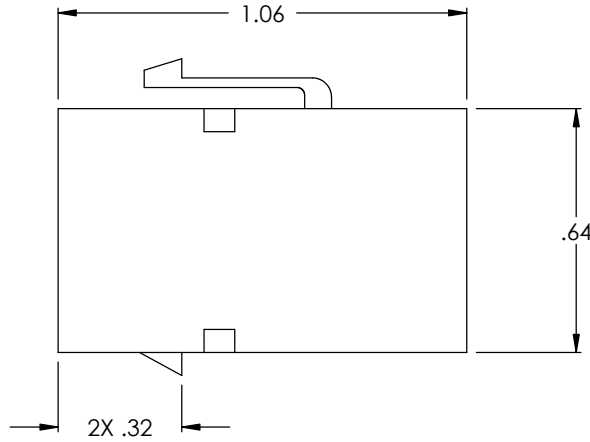


THE INFORMATION CONTAINED IN THIS DRAWING IS THE SOLE PROPERTY OF L-COM, INC. ANY REPRODUCTION IN PART OR WHOLE WITHOUT THE WRITTEN PERMISSION OF L-COM, INC. IS PROHIBITED.

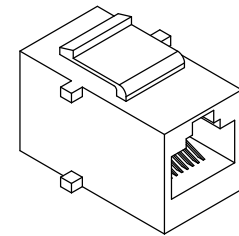
REVISIONS			
REV	DESCRIPTION	DATE	APPROVED
A	INITIAL RELEASE	01/21/03	DFF
B	ECN1482: PANEL OPENING SIZE WAS .580 X .760	9/5/03	DFF
C	ECN1629: ADDED COMPONENT SPECIFICATION TABLE	12/31/03	DFF



2X RJ45 JACK  
(8X8)



RECOMMENDED PANEL OPENING  
MAXIMUM PANEL THICKNESS: .062



Component Specification	
<b>Material</b>	
Housing	Glass Filled Polyester, UL94V-0 compliant, Color: Black
Contacts	Phosphor Bronze
Contact Plating	Selective Gold, over nickel plating
<b>Design</b>	
Jack	Compliant to mechanical requirements of FCC 68.5 Subpart F
<b>Electrical</b>	
Current Rating	1.5 Amp (max)
Voltage Rating	150 VAC (max)
<b>Environmental</b>	
Operating Temperature Range	-20°C to +85°C
<b>Application</b>	
Wiring	Straight through
Maximum Panel Thickness	.062"

CS-196

APPROVALS	DATE
DRAWN BY D. PARHAM	12/30/2002
CHECKED BY C. McCORMICK	01/02/2003
APPROVED BY R. CARRICK	01/09/2003

UNLESS OTHERWISE SPECIFIED,  
DIMENSIONS ARE IN INCHES  
TOLERANCES ARE:  
.X ±.1  
.XX ±.05  
.XXX ±.005  
CABLE LENGTH TOLERANCE  
<300" ±5% >300" ±2%

CONFIGURATION DETAILS OF  
UNDIMENSIONED FEATURES  
MAY VARY

<b>L-com</b> CONNECTIVITY PRODUCTS		45 BEECHWOOD DRIVE NORTH ANDOVER, MA 01845	
PRODUCT DESCRIPTION <b>CATEGORY 3 UNSHIELDED COUPLER</b>			
DRAWING TITLE <b>OUTLINE DRAWING</b>			
SIZE <b>A</b>	FSCM NO. <b>43321</b>	DWG. NO. TDG1026KC3-OD1	REV. <b>C</b>
SCALE: NONE		CAD FILE: TDG1026KC3-OD1.SLDDRW	SHEET 1 OF 1